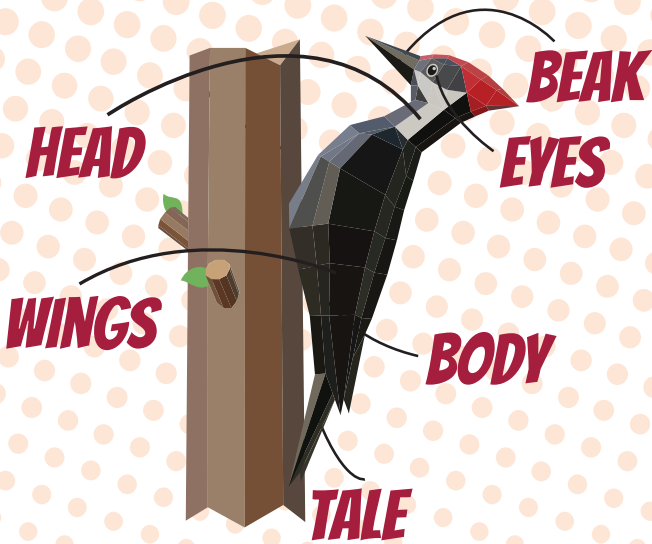


GET STARTED

STEP 1: GET SOME GLUE

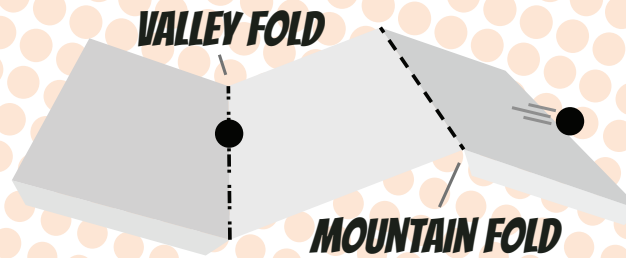
We prefer to use super glue with a nozzle and brush applicator. White wood glue (PVA) and tacky art glue is also fast drying and strong

STEP 2: SORTING



The pieces are labeled with the part of the bird and by the assembly scheme number. These labeling systems will help you assemble your model. The assembly scheme numbers are recommended, but are not the only way to assemble the model.

STEP 3: FOLDING



Folding is important. Dash lines represent mountain folds and should be folded downwards or away from you. Dot-dash lines represent valley folds and should be folded upwards or towards you. Fold the pieces according to their type of fold.

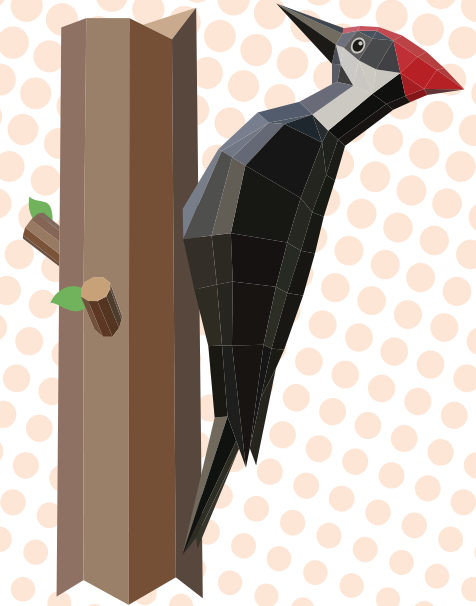
STEP 4: GLUING

Start with the assembly scheme piece 1. The gluing numbers are the small numbers around the edges of each piece. The gluing numbers match each other and must be glued together. If gluing numbers are on the same piece, glue them first before attaching them to the next piece.

ASSEMBLY TIPS:

Be precise when gluing the parts together and make sure edges align perfectly with the flaps. Make sure the flaps are always glued on the inside of the model. Be patient when gluing and allow glue to dry. Take a break if needed. Don't apply too much glue or it will get on parts you don't want it to. If you can't reach a flap to press together use a pencil.

BIRD WATCHING ACADEMY & CAMP



PILEATED WOODPECKER

PAPER MODEL

BirdWatchingAcademy.com